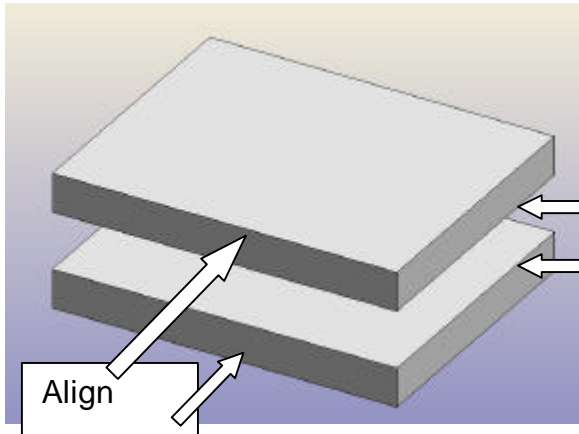


Configurations and Animations in ProDesktop.

Peter and Ruth Thompson Brisbane 2003.


This is a simple introduction to both configurations (Tools \rightarrow Configurations) and animation (Tools \rightarrow Animation)



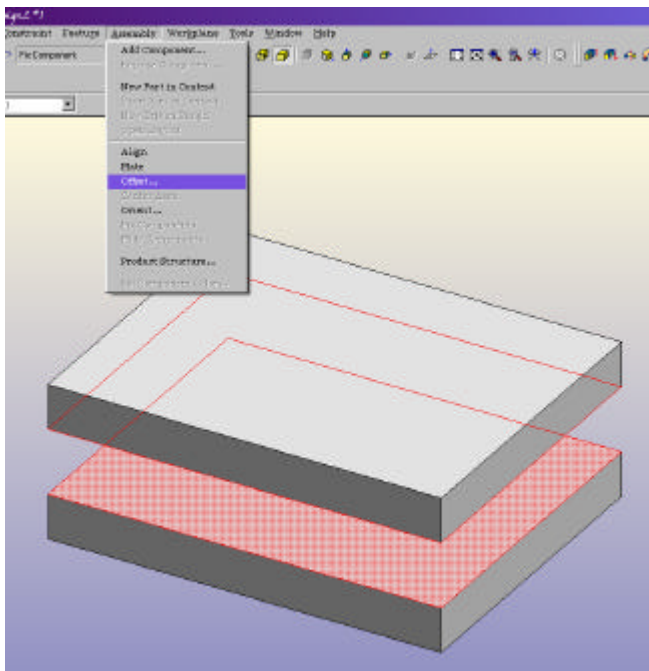
Create a simple assembly drawing of 2 parts, which you can apply a mate, align, orient or offset to.

Draw a plate, save it, start the assembly drawing and add the plate twice, align two faces as shown.

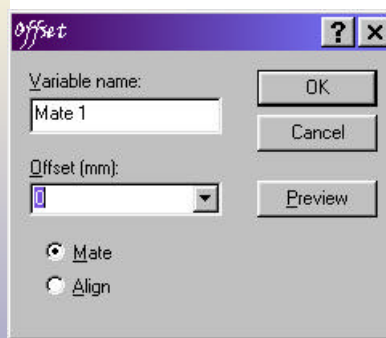
This will enable one plate to slide up and down relative to the other.

Fix the lower one. Select the Part,  and Assembly \rightarrow Fix Component.

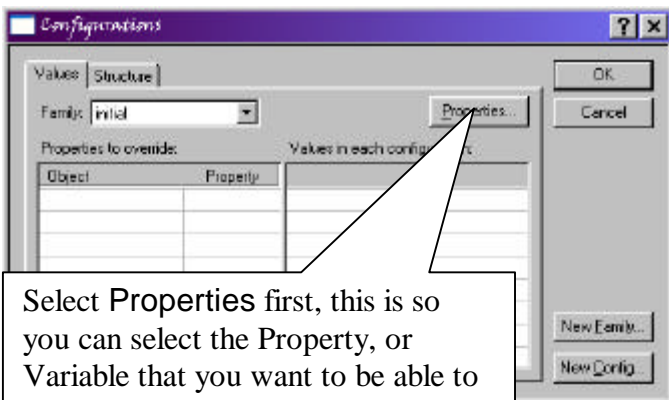
Select the top of the lower plate and the bottom of the upper plate and apply an OFFSET



NOTE, its "Variable name:" is Mate 1, you will use this later to create a configuration where the value of Mate 1 will be either 0 or 100. Accept the default value of 0 mm

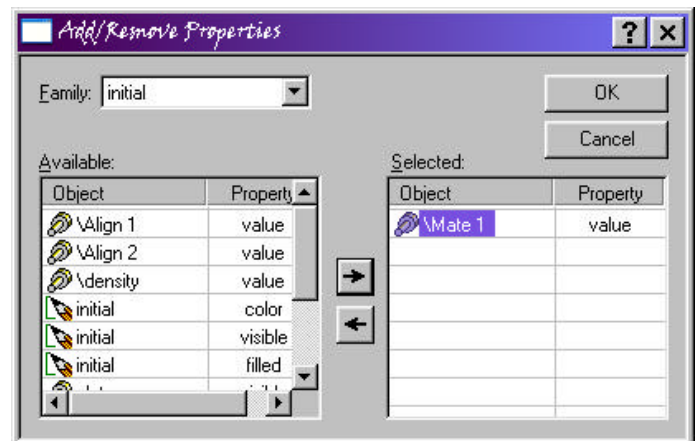


Select Tools \rightarrow Configurations

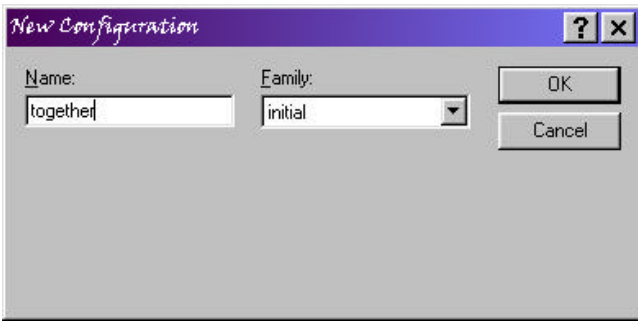


Select Properties first, this is so you can select the Property, or Variable that you want to be able to change.

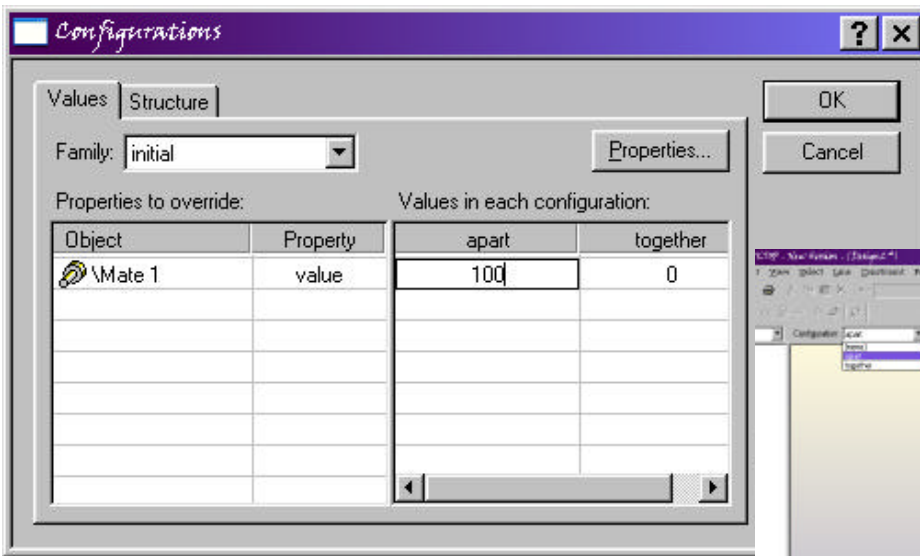
The list that appears will have Mate 1 in it. Select it and click the right arrow to put it on the Selected side, click OK



Now select **New Config** from the **Configurations** sub menu and add two, call one, **together** and the other **apart**

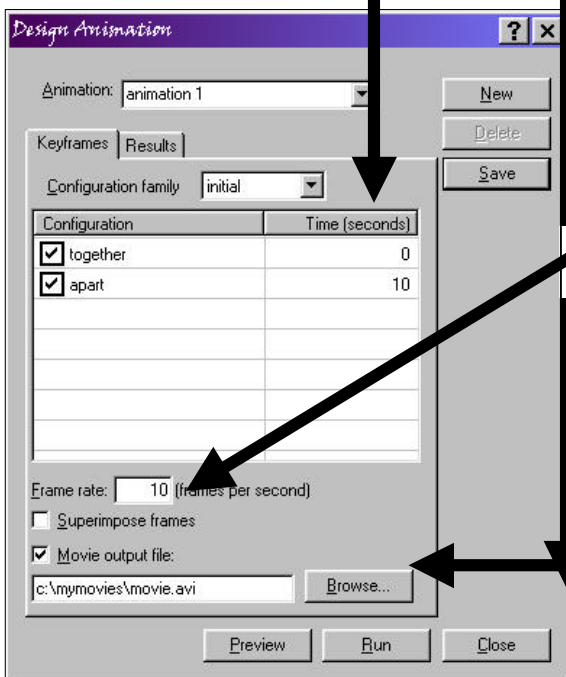
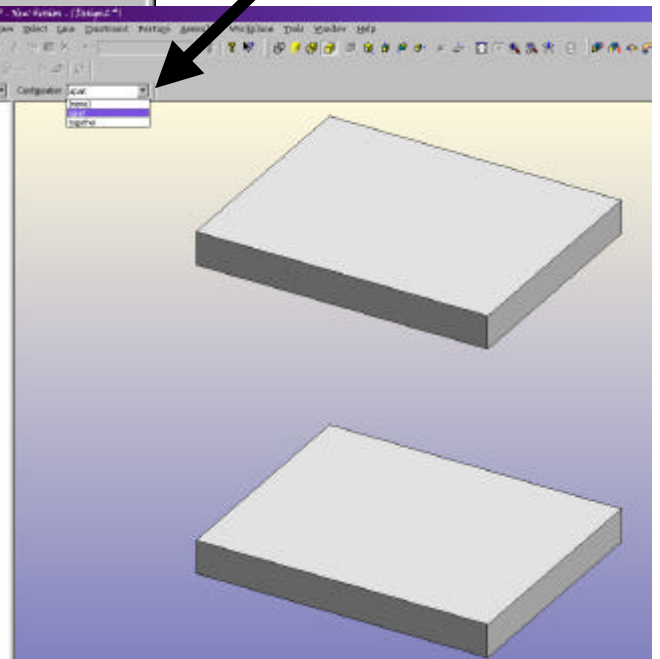


The **Configurations** sub menu will now look like the one below. Under **together**, type 0 and under **apart**, type 100 (this represents the new value for the separation of the offset Mate 1.)

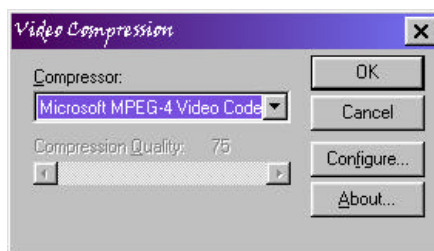


OK this box and you now have 2 configurations that can be easily swapped between.

The last step in the process is to go to **Tools** **Animation** and type in the **Timing** and browse to a location to save the movie.



10 Frames per second is fine, MPEG4 is a good codec to use, these options will appear when you **Run** your animation.



OK this and your movie will be created.

Using video editing software you can add text and transitions to your avi file.

What could you do if you had oriented the ends of the blocks instead of aligning them. What if you added that **Orient** as a **Configuration Property** and made it change from 0 degrees to 90 degrees?

Have fun!